

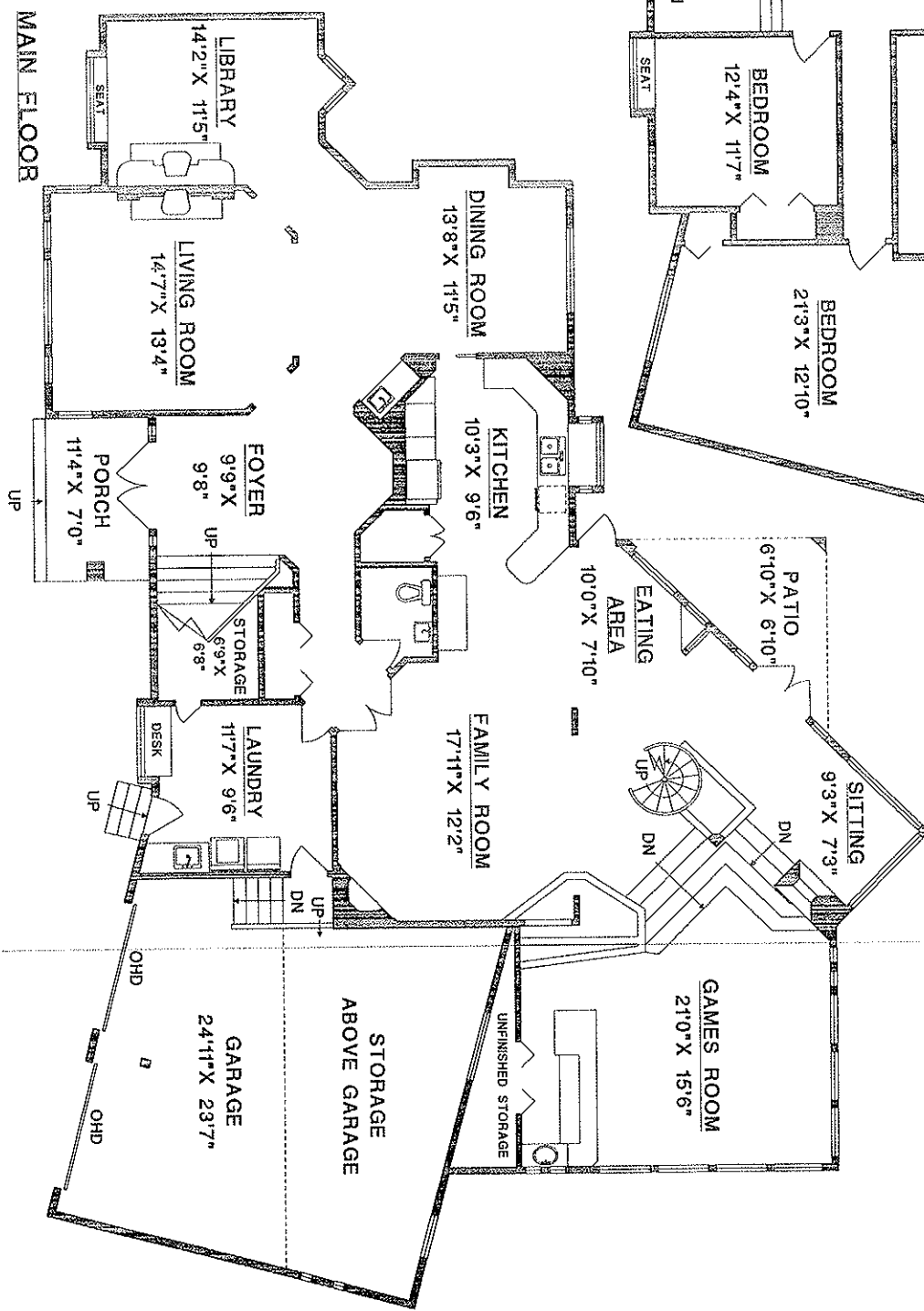
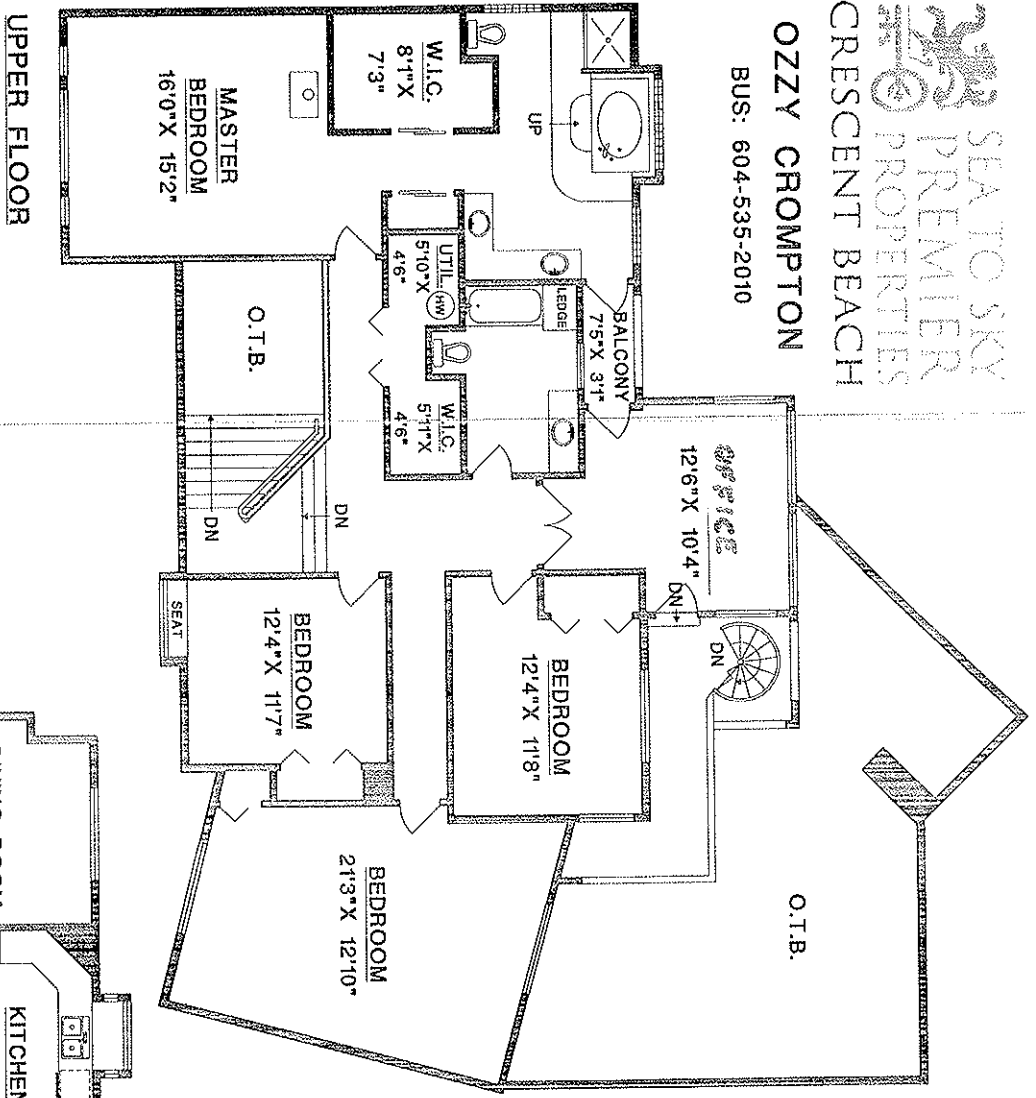
OZZY CROMPTON

BUS: 604-535-2010

13152 22A AVENUE,  
SURREY, B.C.

UPPER FLOOR	2101 SQ. FT.
MAIN FLOOR	2576 SQ. FT.
FINISHED AREA	4677 SQ. FT.
UNFINISHED	41 SQ. FT.
TOTAL AREA	4718 SQ. FT.

GARAGE	672 SQ. FT.
BALCONY	27 SQ. FT.
PATIO	95 SQ. FT.
PORCH	69 SQ. FT.



MEASURE MASTERS  
SURREY/WHITE ROCK  
(604) 539-0285  
DRAWN: MARCH 2010